

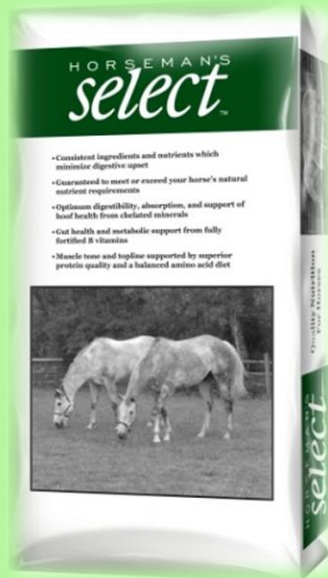


Buckeye Nutrition Products



Horseman's Select 12% Sweet

- Textured feed for mature horses



- 12% Protein
- 3% Fat
- 12% Fiber
- Feed to meet desired body condition



Supreme 14

- Supreme™ 14 by BUCKEYE® Nutrition delivers your horse winning nutrition whether at maintenance or on the track. This high energy feed is highly digestible and is made with the GRO 'N WIN® technology that made BUCKEYE® Nutrition famous.



Crude Protein, Min.	14.00%
Lysine, Min.	0.80%
Methionine, Min.	0.25%
Threonine, Min.	0.45%
Crude Fat, Min.	6.00%
Crude Fiber, Max.	8.50%
Acid Detergent Fiber, Max.	12.00%
Neutral Detergent Fiber, Max.	26.00%
Calcium, Min.	0.50%
Calcium, Max.	1.00%
Phosphorus, Min.	0.50%
Potassium, Min.	0.80%
Copper, Min.	50 ppm
Zinc, Min.	225 ppm
Selenium, Min.	0.60 ppm
Vitamin A, Min.	5,000 IU/lb
Vitamin D, Min.	500 IU/lb
Vitamin E, Min.	100 IU/lb
Omega-6 Fatty Acids, Min.	3.10%
Omega-3 Fatty Acids, Min.	0.30%



Supreme 14

Feature	Benefit
Fixed formula, produced in our equine-dedicated and medication-free facility	With 100% traceable ingredients for ensured consistency
Guaranteed levels of omega-3 and-6 fatty acids	For optimum health and performance
Elevated levels of biotin	Proven to support hoof health
Fortified with GRO 'N WIN® technology	For superior muscle and bone health
Saccharomyces cerevisiae(Yeast Culture)	For improved fiber digestion

MAINTENANCE HORSES:

- Feed Supreme™ 14 at the rate of **0.5% of body weight per day** with hay or pasture.

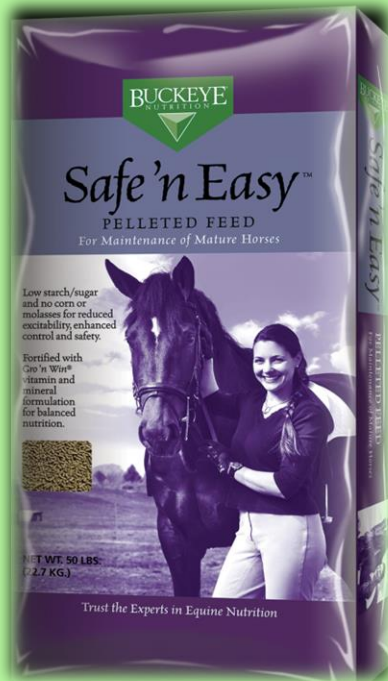
PERFORMANCE HORSES:

- Feed Supreme™ 14 to performance horses at a rate of **0.5% to 1.25% of body weight depending on the activity level.** See table below.
- Feed a minimum of 1% of body weight of good quality hay or its equivalent amount as pasture.



Safe 'n Easy Pelleted

- A low starch and sugar formula



Crude Protein, Min.	12.00%
Lysine, Min.	0.60%
Methionine, Min.	0.19%
Threonine, Min.	0.40%
Crude Fat, Min.	6.00%
Crude Fiber, Max.	20.00%
NSC*, Max.	12.50%
Calcium, Min.	0.80%
Calcium, Max.	1.30%
Phosphorus, Min.	0.65%
Potassium, Min.	0.85%
Magnesium, Min.	0.40%
Manganese, Min.	90 ppm
Copper, Min.	55 ppm
Zinc, Min.	170 ppm
Selenium, Min.	0.70 ppm
Vitamin A, Min.	4,000 IU/lb
Vitamin D, Min.	400 IU/lb
Vitamin E, Min.	150 IU/lb



Safe 'n Easy Pelleted

Recommended for use with horses suffering from tying-up, HYPP, EPSM, digestive problems, post-surgery recovery, hyper-activity or nervousness, poor appetite, Cushings, obesity, insulin resistance, laminitis, colic, and heaves.	Provides essential nutrients without providing excessive energy or starch
Low starch and sugar	Can be fed to horses with metabolic problems
Increased fiber content	Highly digestible and promotes healthy hindgut
Increased levels of lysine, threonine, and methionine	Building blocks for muscle development and maintenance for strong top-line consistency
Contains Omega-6 and -3 fatty acids	Reduces inflammation and promotes membrane integrity
Added chelated minerals, yeast culture, and balanced amino acids	Allows for increased bioavailability and readily utilized by the body to optimize health and performance
Added vitamin E and selenium	Supports the horse's immune function
Heat processed soybeans and added oils	Promotes healthy skin and shiny haircoat

Weight of Mature Horse (lbs)			
Average Daily Work	660 - 880 MIN - MAX (Hay)	880 - 1100 MIN - MAX (Hay)	1100 - 1320 MIN - MAX (Hay)
Idle/Inactive	3.5 - 4.5 (12)	4.5 - 6.0 (16)	5.5 - 7.0 (19)
Less than 30 minutes	4.0 - 5.5 (15)	5.5 - 7.0 (20)	7.0 - 8.0 (20)
30 - 60 minutes	5.0 - 6.5 (15)	6.5 - 8.5 (20)	8.0 - 10 (20)



Safe 'n Easy Texturized

- A low starch and sugar formula



Crude Protein, Min.	12.00%
Lysine, Min.	0.60%
Methionine, Min.	0.19%
Threonine, Min.	0.40%
Crude Fat, Min.	6.00%
Crude Fiber, Max.	20.00%
NSC*, Max.	16.50%
Calcium, Min.	0.80%
Calcium, Max.	1.30%
Phosphorus, Min.	0.65%
Potassium, Min.	0.85%
Magnesium, Min.	0.40%
Manganese, Min.	90 ppm
Copper, Min.	55 ppm
Zinc, Min.	170 ppm
Selenium, Min.	0.70 ppm
Vitamin A, Min.	4,000 IU/lb
Vitamin D, Min.	400 IU/lb
Vitamin E, Min.	150 IU/lb



Safe 'n Easy Texturized

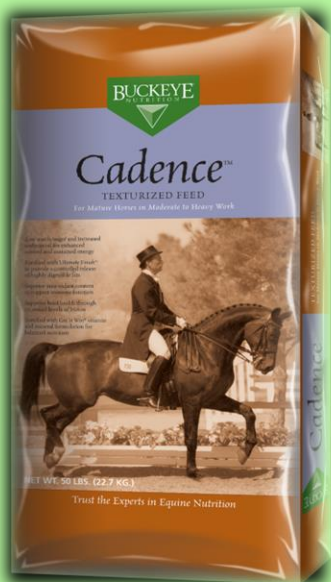
Recommended for use with horses suffering from tying-up, HYPP, EPSM, digestive problems, post-surgery recovery, hyper-activity or nervousness, poor appetite, Cushings, obesity, insulin resistance, laminitis, colic, and heaves.	Provides essential nutrients without providing excessive energy or starch
Low starch and sugar	Can be fed to horses with metabolic problems
Increased fiber content	Highly digestible and promotes healthy hindgut
Increased levels of lysine, threonine, and methionine	Building blocks for muscle development and maintenance for strong top-line consistency
Contains Omega-6 and -3 fatty acids	Reduces inflammation and promotes membrane integrity
Added chelated minerals, yeast culture, and balanced amino acids	Allows for increased bioavailability and readily utilized by the body to optimize health and performance
Added vitamin E and selenium	Supports the horse's immune function
Heat processed soybeans and added oils	Promotes healthy skin and shiny haircoat

Weight of Mature Horse (lbs)			
Average Daily Work	660 - 880 MIN - MAX (Hay)	880 - 1100 MIN - MAX (Hay)	1100 - 1320 MIN - MAX (Hay)
Idle/Inactive	3.5 - 4.5 (12)	4.5 - 6.0 (16)	5.5 - 7.0 (19)
Less than 30 minutes	4.0 - 5.5 (15)	5.5 - 7.0 (20)	7.0 - 8.0 (20)
30 - 60 minutes	5.0 - 6.5 (15)	6.5 - 8.5 (20)	8.0 - 10 (20)



Cadence

- **Show, Training, Working, Lessons.....Cadence is perfect for the working horse that needs extra calories**



Crude Protein, Min.	10.00%
Lysine, Min.	0.76%
Methionine, Min.	0.24%
Threonine, Min.	0.53%
Crude Fat, Min.	10.00%
Crude Fiber, Max.	10.00%
NSC*, Max.	28.50%
Calcium, Min.	0.60%
Calcium, Max.	1.10%
Phosphorus, Min.	0.50%
Potassium, Min.	0.90%
Copper, Min.	45 ppm
Zinc, Min.	130 ppm
Selenium, Min.	0.60 ppm
Vitamin A, Min.	6,000 IU/lb
Vitamin D, Min.	600 IU/lb
Vitamin E, Min.	200 IU/lb
Ascorbic Acid (Vit C), Min.	50 IU/lb
Biotin, Min.	400 mcg/lb
Omega-6 Fatty Acids, Min.	4.88%
Omega-3 Fatty Acids, Min.	1.03%



Cadence

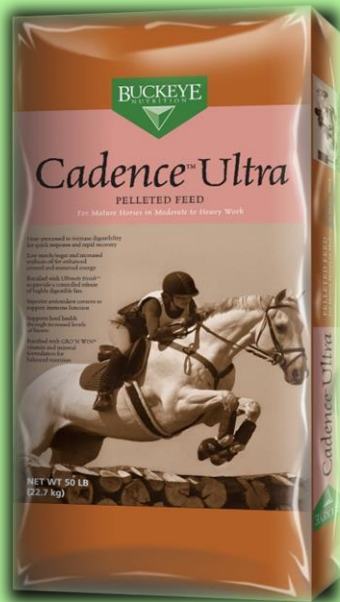
Fortified with GRO 'N WIN® technology	Supplies elevated vitamins and chelated minerals along with balanced essential amino acids for superior protein quality to help maintain your horse's muscle and bone integrity
Added ULTIMATE FINISH®	Provides a controlled release of highly digestible fats
Calm Calories	Higher levels of soybean oil increase energy density while maintaining low starch and sugar to help lessen hyperactivity
Superior antioxidant content	Increased levels of vitamins C and E to support muscle & immune function, such as during times of stress or travel
Elevated levels of biotin	Supports optimum hoof health

Work Load (Pounds of Cadence™ per head per day)					
Animal Body Weight (lbs)	Hay (lbs)	Idle	Light	Mode rate	Intense
600 - 800	9 - 16	2 - 5	4 - 6	5 - 8	6 - 9
800 - 1100	12 - 22	4 - 7	5 - 8	8 - 10	8 - 11
1100 - 1300	16 - 25	5 - 9	6 - 9	10 - 12	10 - 15
1300 - 1500	19 - 30	6 - 10	7 - 10	11 - 14	13 - 17
1500 - 1700	22 - 35	7 - 11	9 - 12	13 - 16	15 - 29
1700 - 2000	25 - 40	8 - 12	10 - 13	15 - 18	17 - 22



Cadence Ultra

- **Is your horse in heavy work? Cadence Ultra is your feed for increased calories, digestibility and performance! This highly palatable sweet pelleted feed helps reduce the risk of digestive upset with gently cooked grains.**



Crude Protein, Min	14.00%
Lysine, Min.	0.76%
Methionine, Min.	0.24%
Threonine, Min.	0.53%
Crude Fat, Min.	14.00%
Crude Fiber, Max.	14.00%
NSC*, Max.	23.00%
Calcium, Min.	0.50%
Calcium, Max.	1.10%
Phosphorus, Min.	0.50%
Potassium, Min.	0.90%
Copper, Min.	50 ppm
Zinc, Min.	130 ppm
Selenium, Min.	0.60 ppm
Vitamin A, Min.	7,000 IU/lb
Vitamin D, Min.	700 IU/lb
Vitamin E, Min.	200 IU/lb
Ascorbic Acid (Vit. C), Min.	50 IU/lb
Biotin, Min.	400 mcg/lb
Omega-6 Fatty Acids, Min.	6.55%
Omega-3 Fatty Acids, Min.	1.35%



Cadence Ultra

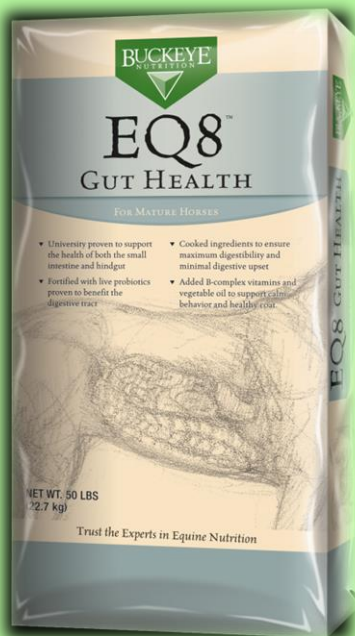
Fortified with GRO 'N WIN® technology	Supplies elevated vitamins and chelated minerals along with balanced essential amino acids for superior protein quality to help maintain your horse's muscle and bone integrity
Added ULTIMATE FINISH®	Provides a controlled release of highly digestible fats
Calm Calories	Higher levels of soybean oil increase energy density while maintaining low starch and sugar to help lessen hyperactivity
Heat-Processed	A blend of extruded and pelleted feed increases digestibility to limit starch from reaching and upsetting the hindgut
Superior antioxidant content	Supports the immune function of your horse
Elevated levels of biotin	Supports optimum hoof health

Animal Body Weight (lbs)	Work Load (Pounds of Cadence™ Ultra per day)				
	Hay (lbs)	Idle	Light	Moderate	Intense
600 - 800	9.0 - 16	2 - 5	4 - 6	5 - 8	6 - 10
800 - 1100	12 - 22	4 - 7	5 - 9	8 - 10	8 - 14
1100 - 1300	16 - 25	5 - 9	6 - 10	10 - 13	10 - 16
1300 - 1500	19 - 30	6 - 11	7 - 12	11 - 16	13 - 19
1500 - 1700	22 - 35	7 - 12	9 - 14	13 - 19	15 - 23
1700 - 2000	25 - 40	8 - 13	10 - 16	15 - 21	17 - 26



EQ8 Gut Health

- **Scientifically formulated nutrition targeting the health of the digestive system.**
- **Utilizing cooked grains to ensure optimal starch digestion in the foregut, and live probiotics to enhance the functionality of the hindgut, EQ8® Gut Health has the nutrients to optimize digestive balance.**



Crude Protein, Min.	12.00%
Lysine, Min.	0.60%
Methionine, Min.	0.18%
Threonine, Min.	0.40%
Crude Fat, Min.	8.00%
Crude Fiber, Max.	14.00%
NSC*, Max.	23.00%
Calcium, Min.	0.70%
Calcium, Max.	1.20%
Phosphorus, Min.	0.65%
Potassium, Min.	0.85%
Magnesium, Min.	0.30%
Manganese, Min.	95 ppm
Copper, Min.	40 ppm
Zinc, Min.	140 ppm
Selenium, Min.	0.60 ppm
Vitamin A, Min.	6,000 IU/lb
Vitamin D, Min.	600 IU/lb
Vitamin E, Min.	300 IU/lb
Ascorbic Acid (Vit. C), Min.	65 IU/lb
*Total Microorganisms	100,000,000 CFU/lb



EQ8 Gut Health

University tested	Proven to support the health of both the small intestine and hindgut, and to reduce multiple risk factors that commonly lead to digestive upset
Increased fat levels and lower starch and sugar levels	Helps to minimize stomach upset and support calm behavior
Formulated with steam and pressure-cooked ingredients	Minimizes the risk of excess starch reaching the large intestine
Fortified with live probiotics	Ensures maximum benefit of microbes for the hindgut
Fortified with GRO 'N WIN® technology	Provides essential nutrient availability
Manufactured using BioFuze® technology	Live probiotics (cultures of bacteria) applied post-processing to ensure effective levels are available for optimum microbial activity

Animal Body Weight (lbs)	*Hay (lbs)	Work Load (Pounds of EQ8® Gut Health per day)				Intense
		Idle	Light	Moderate		
600 - 800	9.0 - 16	2 - 5	4 - 6	5 - 8	6 - 10	
800 - 1100	12 - 22	3 - 7	5 - 9	8 - 10	8 - 14	
1100 - 1300	16 - 25	4 - 8	6 - 10	10 - 13	10 - 16	
1300 - 1500	19 - 30	6 - 11	7 - 12	11 - 16	13 - 19	
1500 - 1700	22 - 35	7 - 12	9 - 14	13 - 19	15 - 23	
1700 - 2000	25 - 40	8 - 13	10 - 16	15 - 21	17 - 26	



EQ8 Senior

- **EQ8[®] Senior is lower in starch and sugar, fortified with live probiotics, and with additional fat, digestible fiber and superior antioxidant content your senior horses will be racing to see who gets fed first.**



Crude Protein, Min.	12.00%
Lysine, Min.	0.60%
Methionine, Min.	0.18%
Threonine, Min.	0.40%
Crude Fat, Min.	10.00%
Crude Fiber, Max.	16.00%
NSC*, Max.	21.50%
Calcium, Min.	0.70%
Calcium, Max.	1.20%
Phosphorus, Min.	0.60%
Potassium, Min.	0.85%
Magnesium, Min.	0.30%
Manganese, Min.	90 ppm
Copper, Min.	40 ppm
Zinc, Min.	130 ppm
Selenium, Min.	0.60 ppm
Vitamin A, Min.	5,000 IU/lb
Vitamin D, Min.	500 IU/lb
Vitamin E, Min.	200 IU/lb
Ascorbic Acid (Vit. C), Min.	65 IU/lb
*Total Microorganisms	100,000,000 CFU/lb



EQ8 Senior

Lower starch and sugar, added fat and digestible fiber	Contains caloric components specifically for senior horses on restricted starch and sugar diets
Fortified with live probiotics	Helps the senior horse create a barrier of protection against harmful bacteria
Manufactured using BioFuze® technology	Ensures the viability of the probiotic species
Formulated with steam and pressure cooked grains	Increases digestibility and helps minimize levels of starch reaching the large intestine
Fortified with GRO 'N WIN® technology	Provides essential vitamins, minerals and amino acids not adequately supplied by the forage. Guaranteed levels of lysine, methionine and threonine, shown to help muscle condition in the senior horse
Superior antioxidant content	Formulated with additional selenium plus vitamin E, and added omega-6 and -3 fatty acids aimed to help reduce inflammation and support healthy immune function

Animal Body Weight (lbs)	Work Load (Pounds of EQ8® Senior per day)				
	*Hay (lbs)	Idle	Light	Moderate	Intense
600 - 800	9.0 - 16	2 - 5	4 - 6	5 - 8	6 - 10
800 - 1100	12 - 22	3 - 7	5 - 9	8 - 10	8 - 14
1100 - 1300	16 - 25	4 - 8	6 - 10	10 - 13	10 - 16
1300 - 1500	19 - 30	6 - 11	7 - 12	11 - 16	13 - 19
1500 - 1700	22 - 35	7 - 12	9 - 14	13 - 19	15 - 23
1700 - 2000	25 - 40	8 - 13	10 - 16	15 - 21	17 - 26



Senior

- A naturally palatable, low molasses feed, Senior Texturized is designed for healthy, older horses with functional teeth that can still eat long-stemmed forage.



Crude Protein, Min.	12.00%
Lysine, Min.	0.60%
Methionine, Min.	0.18%
Threonine, Min.	0.41%
Crude Fat, Min.	5.00%
Crude Fiber, Max..	15.00%
NSC*, Max.	22.50%
Calcium, Min.	0.80%
Calcium, Max.	1.30%
Phosphorus, Min.	0.65%
Potassium, Min.	0.80%
Magnesium, Min.	0.30%
Copper, Min.	40 ppm
Zinc, Min.	120 ppm
Selenium, Min.	0.60 ppm
Vitamin A, Min.	4,000 IU/lb
Vitamin D, Min.	400 IU/lb
Vitamin E, Min.	200 IU/lb
Omega-6 Fatty Acids, Min.	2.40%
Omega-3 Fatty Acids, Min.	0.34%



Senior

Feature	Benefit
Fortified with GRO 'N WIN® technology	Supplies essential vitamins and chelated minerals along with amino acids for superior protein quality to help maintain muscle and bone integrity
Recommended for old age, Cushings, obesity, insulin resistance, laminitis, colic and heaves.	Provides essential nutrients without providing excessive energy or starch
Low starch and sugar	Can be fed to horses with metabolic problems
High in digestible fiber	Helps to promote a healthy hindgut
Guaranteed levels of omega-6 and -3 fatty acids	Reduces inflammation and promotes membrane integrity
Added antioxidants	Supports the horse's immune function
Soybean oil	Promotes healthy skin and shiny haircoat

Weight of Mature Horse (lbs)			
Average Daily Work	660 - 880 MIN - MAX (Hay)	880 - 1100 MIN - MAX (Hay)	1100 - 1320 MIN - MAX (Hay)
Idle/Inactive	3.5 - 4.5 (12)	4.5 - 6.0 (16)	5.5 - 7.0 (19)
Less than 30 minutes	4.0 - 5.5 (15)	5.5 - 7.0 (20)	7.0 - 8.0 (20)
30 - 60 minutes	5.0 - 6.5 (15)	6.5 - 8.5 (20)	8.0 - 10 (20)



GRO 'N WIN

- **Not all forage is created equal. That's why GRO 'N WIN® is the perfect ration balancer to complement your horse's forage. Created to be fed as a stand-alone feed or a supplement to your horse's daily grain diet, it is formulated with a precise balance of amino acids, vitamins and minerals for easy digestion and absorption.**



Crude Protein, Minimum	32.00%
Lysine, Minimum	2.20%
Threonine, Minimum	1.20%
Methionine, Minimum	0.50%
Crude Fat, Minimum	5.00%
Crude Fiber, Maximum	5.00%
NSC (Starch plus Sugar)*, Maximum	13.00%
Calcium, Minimum	2.50%
Calcium, Maximum	3.50%
Phosphorus, Minimum	1.50%
Salt, Minimum	1.00%
Salt, Maximum	1.50%
Potassium, Minimum	1.50%
Magnesium, Minimum	0.40%
Manganese, Minimum	240 ppm
Iron, Minimum	600 ppm
Copper, Minimum	200 ppm
Zinc, Minimum	400 ppm
Iodine, Minimum	4 ppm
Cobalt, Minimum	4 ppm
Selenium, Minimum	1.5 ppm
Vitamin A, Minimum	22,000 IU/lb
Vitamin D, Minimum	2,200 IU/lb
Vitamin E, Minimum	500 IU/lb
Ascorbic Acid (Vitamin C), Minimum	100 IU/lb
Biotin, Minimum	2.9 mg/lb
Thiamine (Vitamin B-1), Minimum	30 mg/lb
Omega-6 Fatty Acids, Minimum	2.66%
Omega-3 Fatty Acids, Minimum	0.45%



GRO 'N WIN

Low starch and sugar	University proven low glycemic and low insulinemic formula Can help lessen hyperactivity and negative metabolic effects Veterinarian recommended for use with animals suffering from starch sensitive conditions such as laminitis and insulin resistance
Low calories	Ideal for ponies, miniature horses and easy-keepers Easy regulation of calories to keep your horse from getting obese
Added flaxseed	Added source of omega-3 fatty acids, which supports a healthy and brilliant hair coat
Elevated levels of biotin	Supports optimum hoof health
Increased vitamins C & E	Extremely effective antioxidants to support your horse's immunity and metabolic function
Specifically balanced amino acids	Maintains and builds top-line and overall muscle condition

Pounds of GRO 'N WIN® per head per day					
Animal Body Weight (lbs)	*Hay (lbs)	Idle	Light	Moderate	Intense
100 - 200	1.5 - 4.0	0.2	0.3	0.5	0.75
200 - 400	3.0 - 8.0	0.3	0.5	0.75	1.5
400 - 600	6.0 - 12	0.5	0.75	1.0	2.0
600 - 800	9.0 - 16	0.75	1.25	1.5	2.5
800 - 1100	12 - 22	1.25	1.5	2.0	2.75
1100 - 1300	16 - 25	1.5	1.75	2.5	3.0
1300 - 1500	19 - 30	1.75	2.0	3.0	3.5
1500 - 1700	22 - 35	2.0	2.5	3.5	4.0
1700 - 2000	25 - 40	2.25	2.75	3.75	4.25



GRO 'N WIN ALFA

- Not all forage is created equal. That's why GRO 'N WIN® Alfa is the perfect ration balancer to complement your horse's legume forage.



Crude Protein, Minimum	12.00%
Lysine, Minimum	1.30%
Threonine, Minimum	0.40%
Methionine, Minimum	0.30%
Crude Fat, Minimum	5.00%
Crude Fiber, Maximum	20.00%
NSC (Starch plus Sugar)*, Maximum	16.00%
Calcium, Minimum	1.00%
Calcium, Maximum	1.50%
Phosphorus, Minimum	1.50%
Salt, Minimum	1.00%
Salt, Maximum	1.50%
Potassium, Minimum	0.60%
Magnesium, Minimum	0.40%
Manganese, Minimum	240 ppm
Iron, Minimum	600 pm
Copper, Minimum	200 ppm
Selenium, Minimum	1.50 ppm
Vitamin A, Minimum	22,000 IU/lb
Vitamin D, Minimum	2,200 IU/lb
Vitamin E, Minimum	500 IU/lb
Biotin, Minimum	2.90 mg/lb
Thiamine (Vitamin B-1), Minimum	30 mg/lb
Omega-6 Fatty Acids, Minimum	2.60%
Omega-3 Fatty Acids, Minimum	0.40%



GRO 'N WIN ALFA

Low starch and sugar	<p>University proven low glycemic and low insulinemic formula</p> <p>Can help lessen hyperactivity and negative metabolic effects</p> <p>Veterinarian recommended for use with animals suffering from starch sensitive conditions such as laminitis and insulin resistance</p>
Low calories	<p>Ideal for ponies, miniature horses and easy-keepers</p> <p>Easy regulation of calories to keep your horse from getting obese</p>
Added flaxseed	<p>Added source of omega-3 fatty acids which supports a healthy and brilliant hair coat</p>
Elevated levels of biotin	<p>Supports optimum hoof health</p>

Animal Body Weight (lbs)	*Hay (lbs)	Idle	Light	Mode rate	Intens e
100 - 200	1.5 - 4.0	0.2	0.3	0.5	0.75
200 - 400	3.0 - 8.0	0.3	0.5	0.75	1.5
400 - 600	6.0 - 12	0.5	0.75	1.0	2.0
600 - 800	9.0 - 16	0.75	1.25	1.5	2.5
800 - 1100	12 - 22	1.25	1.5	2.0	2.75
1100 - 1300	16 - 25	1.5	1.75	2.5	3.0
1300 - 1500	19 - 30	1.75	2.0	3.0	3.5
1500 - 1700	22 - 35	2.0	2.5	3.5	4.0
1700 - 2000	25 - 40	2.25	2.75	3.75	4.25



ULTIMATE FINISH

- **25% fat supplement used to increase calories without adding more grain**



Crude Protein, Min.	12.00%
Crude Fat, Min.	25.00%
Crude Fiber, Max.	8.00%
Calcium, Min.	0.50%
Calcium, Max.	1.00%
Phosphorus, Min.	0.50%
Potassium, Min.	1.00%
Copper, Min.	30 ppm
Zinc, Min.	75 ppm
Selenium, Min.	0.30 ppm
Vitamin A, Min.	3,000 IU/lb
Vitamin E, Min.	300 IU/lb
Omega-6 Fatty Acids, Min.	10.50%
Omega-3 Fatty Acids, Min.	4.50%



ULTIMATE FINISH

Gently cooked extruded nugget	Provides superior digestibility and reduces opportunity for sorting
Highly palatable, calorie dense fat source	A low inclusion rate provides highly digestible fats in a smaller meal size
Contains human grade stabilized rice bran	An excellent source of Gamma Oryzanol, an antioxidant known to support immune function
Added source of omega-3 and omega-6 fatty acids	Reduces inflammation and supports healthy immune function
Decreases thermal stress during exercise	Horse produces less body heat than when utilizing carbohydrate energy sources
Decreases lactic acid production	Increases endurance and stamina
Low starch and sugar formula	A controlled release of highly digestible fats which can safely be fed to horses with metabolic issues

Formulated for increased body condition as well as an additional calorie source for horses involved in:

- Competition
- Training
- Showing
- Conditioning and Sales Prep
- Reproduction (Gestating and Lactating Mares and Breeding Stallions)

PER 1,000 POUNDS BODY WEIGHT:

- For increased weight or body condition, add 0.5 lb to 3 lbs daily.
- For increased hair coat quality and healthy skin, add 0.25 to 0.5 lbs daily.
- Start adding ULTIMATE FINISH® very slowly to the ration (0.25 lbs daily), and work up to the needed amount.